

HERITAGE

Wander in the ancient times of a historic village, where ancestry and modernity coexist with the Lousã Mountain and its Schist Villages.



MUNICIPALITY

- Schist Village
- 1 Candal
 - 2 Casal Novo
 - 3 Cerdeira
 - 4 Chiqueiro
 - 5 Talasnal

- River Beach
- 6 Senhora da Piedade
 - 7 Bogueira
 - 8 Senhora da Graça

Heritage

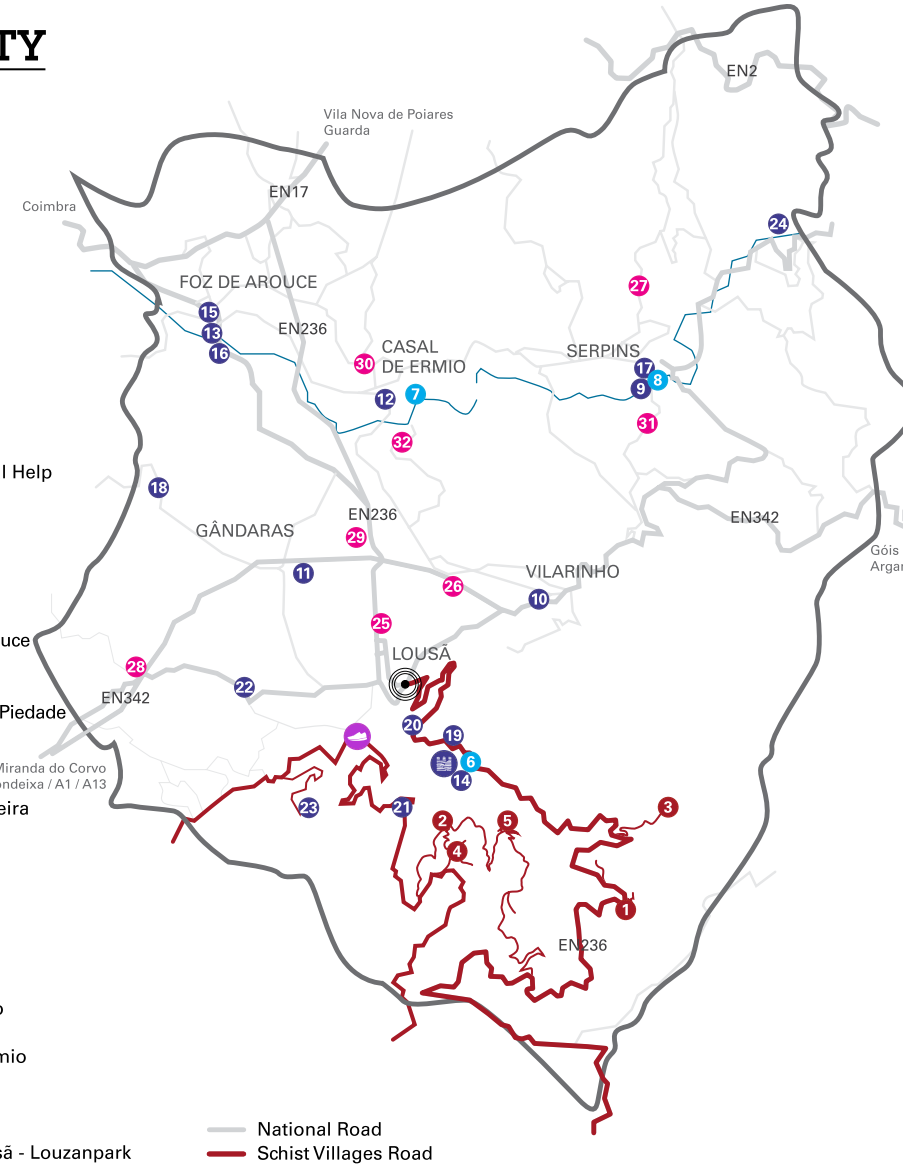
- 9 Church of Our Lady of Perpetual Help
- 10 St. Peter's Church
- 11 St. Luzia's Church
- 12 St. Anthony's Church
- 13 Parish Church of Foz de Arouce
- 14 Chapels of Our Lady of Pity
- 15 Obelisk - French Invasions
- 16 House of the Count of Foz de Arouce
- 17 Pillory of Serpins
- 18 Viewpoint terrace Manuel Vaz
- 19 Viewpoint terrace of Senhora da Piedade
- 20 Viewpoint terrace of Gevim
- 21 Viewpoint terrace of Tarrasteira
- 22 Viewpoint terrace of Arneiro
- 23 Viewpoint terrace of Vale Nogueira
- 24 Cabril do Ceira (a gorge)

Castle of Arouce

Municipal Equipment

- 25 Railway station
- 26 Public Health Centre
- 27 Fire Station of Serpins
- 28 Business Park of Alto do Padrão
- 29 Business Park of Matinhos
- 30 Business Centre of Casal de Ermio
- 31 Business Park of Serpins
- 32 Municipal Aerodrome of Lousã

- Mountain Biking Centre of Lousã - Louzanpark



— National Road
— Schist Villages Road



Contacts

Rua Dr. João Santos
3200-953 Lousã
T 239 990 370
M 910 020 963/4
912 217 813/4
966 618 391 / 936 518 710
geral@cm-lousa.pt

www.cm-lousa.pt



Lousã Mountain

Guardian mountain of my childhood
That holds a thousand memories from the past...
Never have you been struck with harsh war
Nor has your lovely home been disturbed

Among the pine trees of healthy fragrance,
The white smoke of the mountain couples
Remind patches of snow on the ground
Bluish in the mist of distance

Birthplace of my grandparents, harsh mountain
You have a noble expression, serious and sincere
From which blooms serene peace and quiet...

How good I feel when I see you!
Oh, Sacred Mountain, my desire
Would be to merge thee in my soul!

Eugénio Sanches da Gama

LOUSÃ INVITES



LOUSA
Câmara Municipal

INVITES

Discover a dynamic Municipality, with hospitable people and entrepreneurs. Practice Adventure Sports and Leisure Activities. Taste the local Cuisine and enjoy a rich and diverse cultural agenda.

Fall in love with a place to live for a day or for a lifetime!

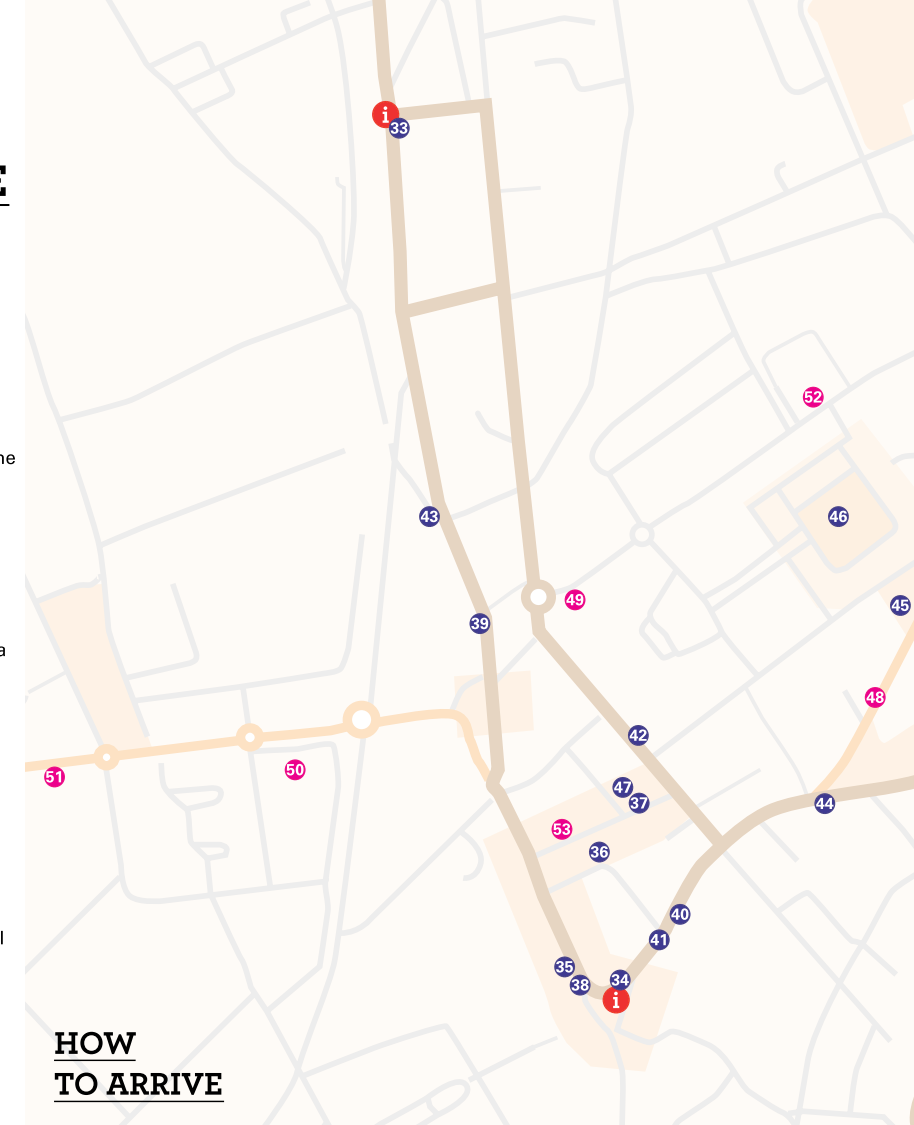


THE VILLAGE CENTRE

- Heritage
- Ethnographic Museum Dr. Louzã Henriques
- Municipal Museum Professor Álvaro Viana de Lemos / Welcome Centre of the Schist Villages
- Chapel of Mercy
- Parish Church
- Pillory of Lousã
- Palace of Salazares
- House of the End of the Village
- House Furtado Mesquita
- Top House of the Almeidas Serra
- Municipal Library
- Comendador Montenegro
- Fountain of Dr. Pires de Carvalho Road
- Carlos Reis Park Tree-lined Promenade
- Monument to the Family
- Sá Carneiro Square
- Council Chambers
- Municipal Equipment
- Carlos Reis Park Swimming Pool
- Cine-theatre
- Municipal Exhibition Park
- Police Station
- Municipal Fire Station of Lousã
- Post Office
- Tourist Information

HOW TO ARRIVE

Coimbra » Lousã ◉ EN 17 ◉ 30 m
Lisboa » Lousã ◉ A1/A13/EN342 ◉ 2h
Porto » Lousã ◉ A1/A13/EN342 ◉ 1h30m
Guarda (Vilar Formoso) » Lousã ◉ A25/IP3/EN17 ◉ 2h30m



NATURE

Let yourself be embraced by unforgettable moments. Explore the Footpaths, plunge into the refreshing River Beaches, listen to the sounds of nature or vibrate with the adrenaline from the trails for mountain biking and walks.

GASTRONOMY

Indulge yourself with the unique flavours of local cuisine that combines tradition and innovation. Taste kid goat, traditional stew, certified honey from the Lousã Mountain, traditional Desserts, Foz de Arouce wine and Licor Beirão.

